

13849

# Mermaid tribe



13849 Instruction manual

# NOTICE OF ASSEMBLE

## Self-provided tools



Scissors:  
Can be used to cut printed paper, cloth, etc.



Screw Driver:  
For fixing screws, mostly can be used to install doors and music components.



Tweezers:  
For holding small materials and rolling up iron wire.



Cutter knife:  
For peeling off power wire skin and cutting off materials.



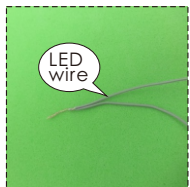
Ruler:  
For measuring materials to identify the number of materials so as to enhance work efficiency.

## ⚠ Warnings

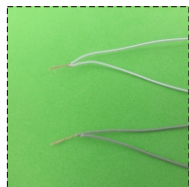
- The product is not suitable for children under 14 years old. They should be under the custody of adults when playing with the product.
- There are small parts, please do not swallow them to avoid dangerous accidents.
- Please also pay attention to the sharp-pointed materials to avoid injuries.

## Making tips

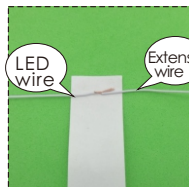
1. LED wiring indication: White=Positive; Grey=Negative.
2. Use a craft blade to carefully skim over the plastic to bare the copper wire.
3. For LED wiring extension, please refer to the below steps:



Twist the copper of both LED wire and extension wire together.



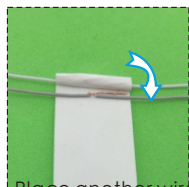
Do the same on the white wire. Remarks: Tie a knot at the end of the grey wire to differentiate the polarity.



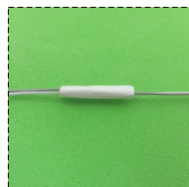
Place the duly twisted wire on the tapes provided.



Roll and wrap the wire.



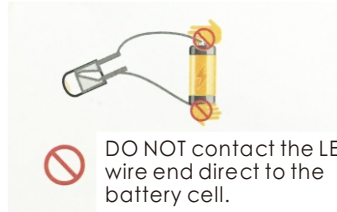
Place another wire next to it. Remarks: DO NOT contact both copper wire to avoid short circuit.



Roll and wrap it together.

## Tips for assembling

1. Pictures shown on the package may be slightly different from the actual product.
2. Please use the provided tracing paper for cutting purpose to achieve the best outcome.
3. Product designs and specifications may be subject to change without advance notice for the purpose of making improvements.
4. Testing on LED function:



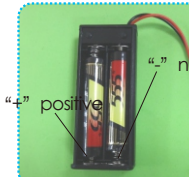
## How to assemble the battery holder



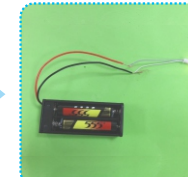
1. Material and tools needed:  
- Battery holder, LED bulb, tape, screw driver and 2 pieces AA size battery (not provided)



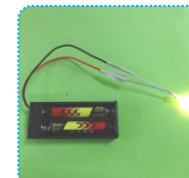
2. Use a screw driver and take the lid off from the battery holder.



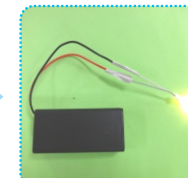
3. Insert the battery taking notes on the polarity.



4. Connect the red wire to the grey wire. Connect the black wire to the white wire.



5. Wrap the exposed wires with the tapes.



6. Place the box lid and fasten it with a screwdriver.



# Product information



Corner sofa



Circular sofa



Small sofa



Big sofa



Window

Bed

Toilet

Cabinet

TV

Flower shelving

Street lamp

Dog



Piano

Dining table

Corner sofa

Swimming pool

Plant

Big sofa

Floor lamp

Bedside table

Bathroom



Bed

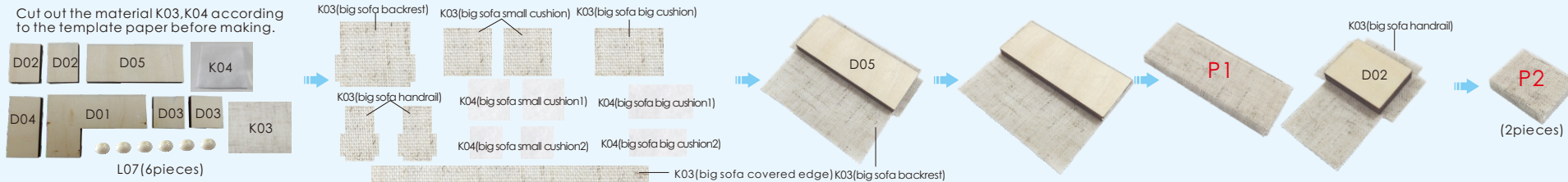


flower shelving



# Big sofa

Cut out the material K03, K04 according to the template paper before making.



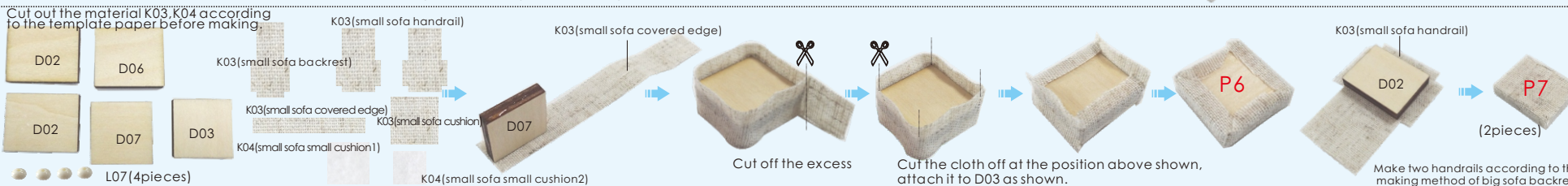
Make two handrails according to the making method of backrest.



Make two small cushions according to the making method of big cushion.

# Small sofa

Cut out the material K03, K04 according to the template paper before making.



Make two handrails according to the making method of big sofa backrest.



Make a small cushion according to the making method of big sofa small cushion.



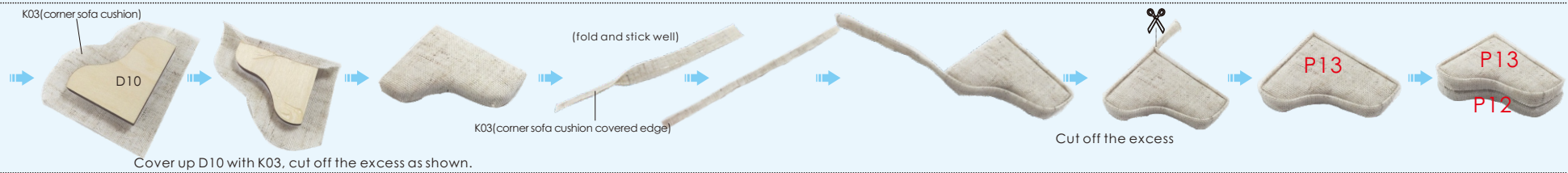
# Circular sofa

Cut out the material K03,K04 according to the template paper before making.

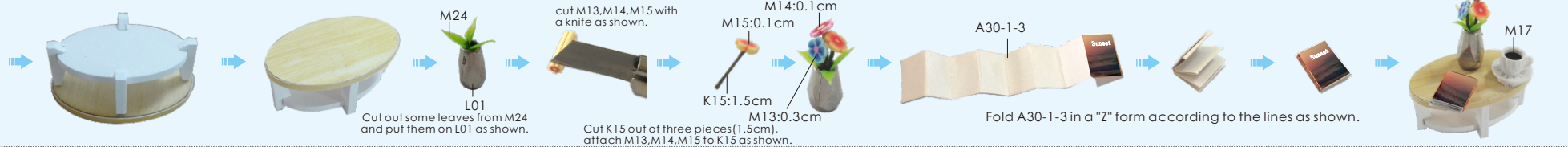


# Corner sofa

Cut out the material K03,K04 according to the template paper before making.



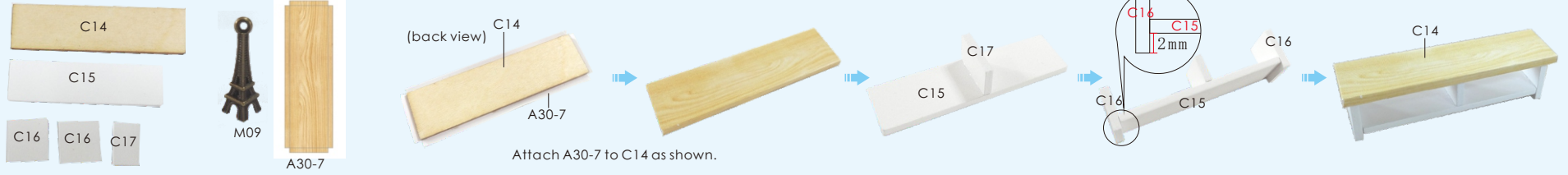
# Table



# BOX



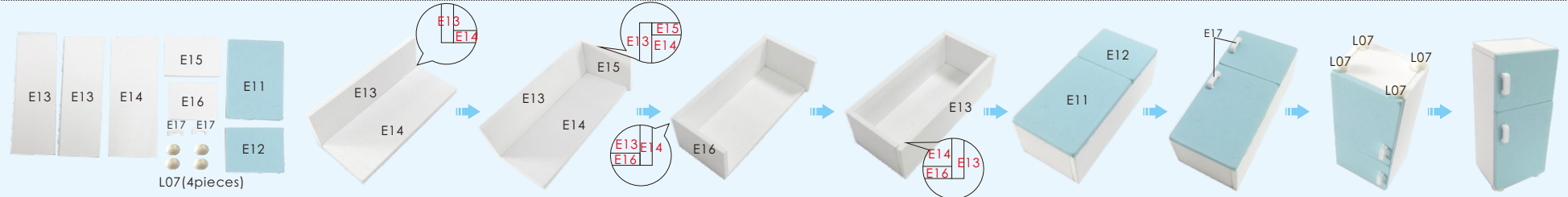
# TV console



# Mirror

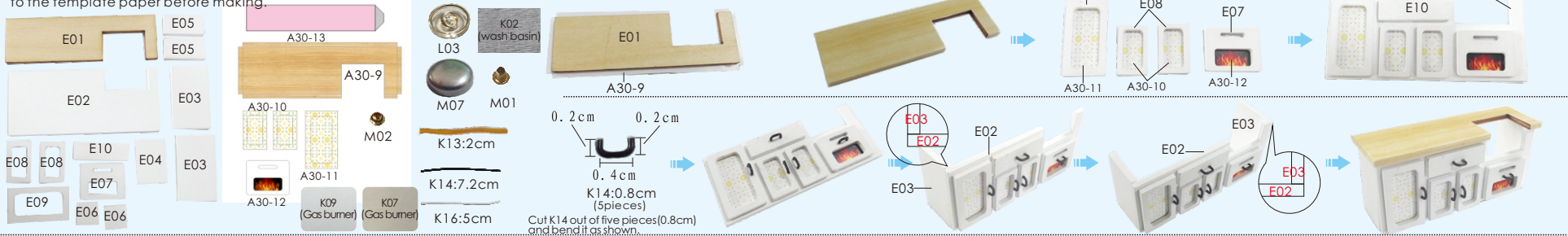


# Refrigerator



# Cabinet

Cut out the material K02, K07 and K09 according to the template paper before making.





# Dining table

Attach A30-14-1, A30-14-2 to F10 as shown.

K04(dining chair cushion)  
K03(dining chair cushion)  
Cover up K04 with K03, attach it on the chair form as shown. (3pieces)

The making method, please refer to page 4.

M10:0.1cm(4pieces)  
M11:0.1cm(6pieces)  
Cut out M10 and M11 according to before method, attach them to the cake rack as shown.

Follow the above steps to make the cake rack.

(Template: 1. K03 dining chair cushion 2. K04 dining chair cushion 3. A27 cake rack)

# Wall cabinet

the boxes we made before

M10:0.5cm  
M11:0.5cm

M10:1cm\*5pieces  
M11:0.1cm\*5pieces

Attach K02 on canning form, tie it up with K11 as shown, another method of canning is the same.

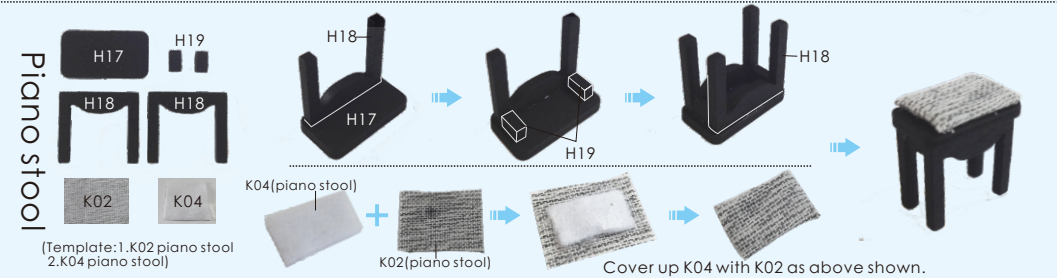
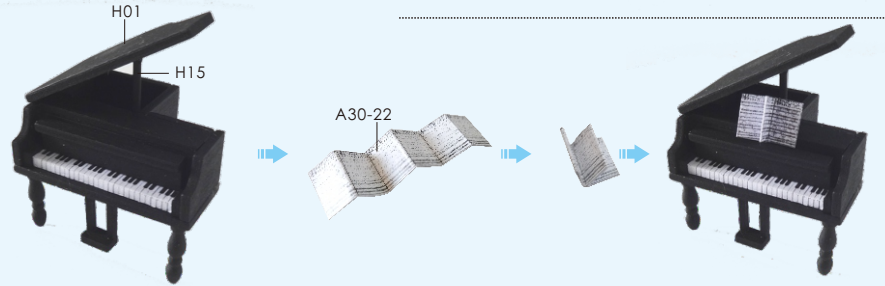
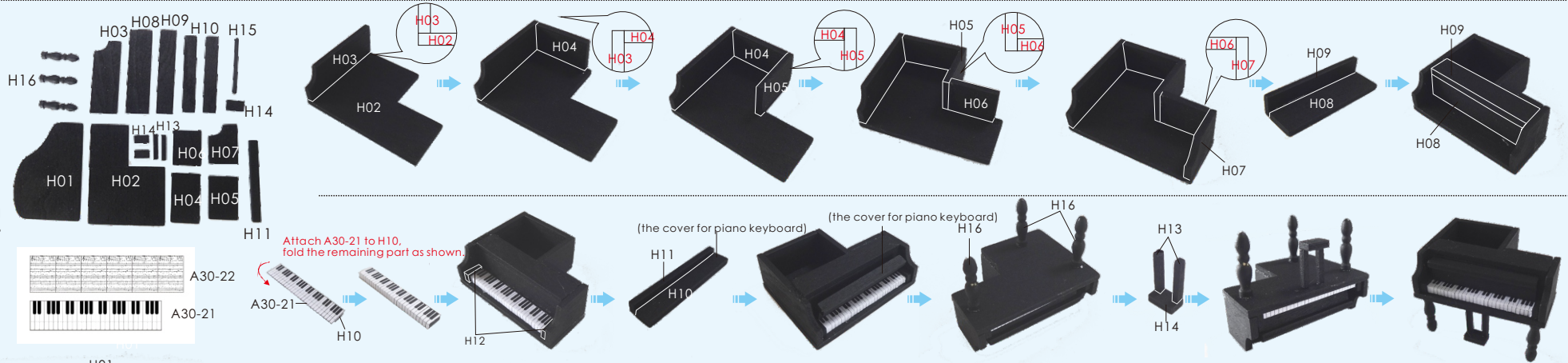
# Bedside table

Cut K16 out of a piece(2.6cm) and bend it as shown.

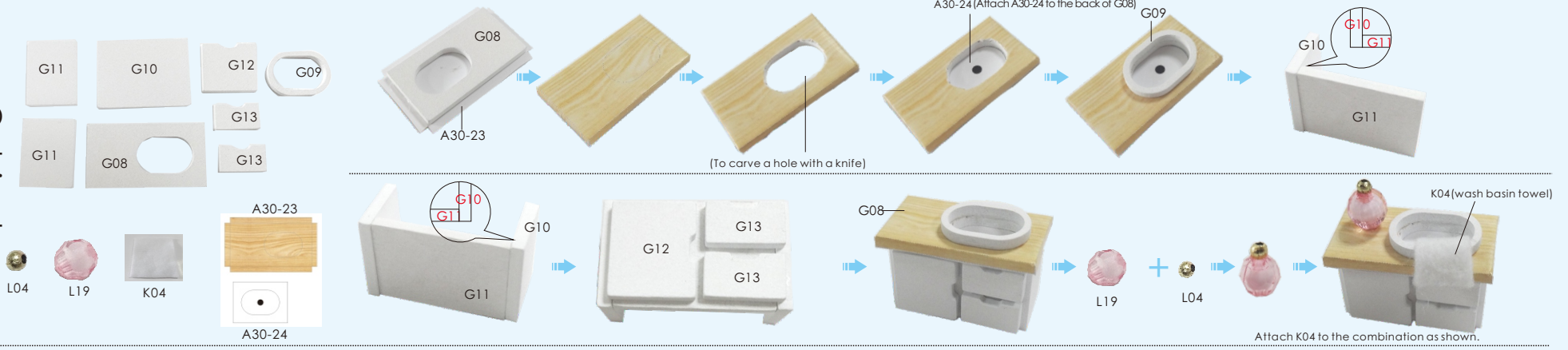
K16:2.6cm  
K10:2cm

G07  
G05  
2mm

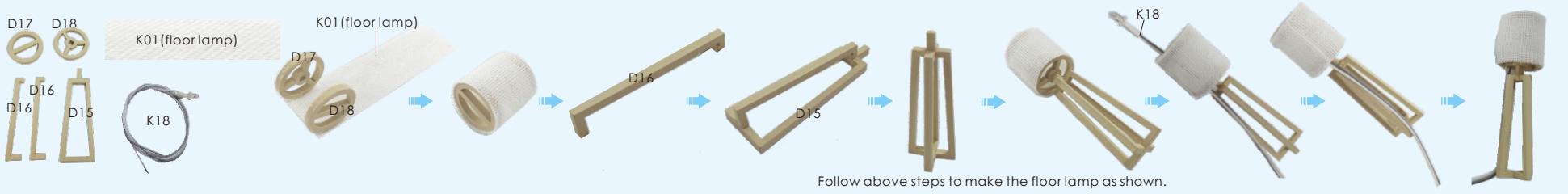
# Piano



# Cabinet



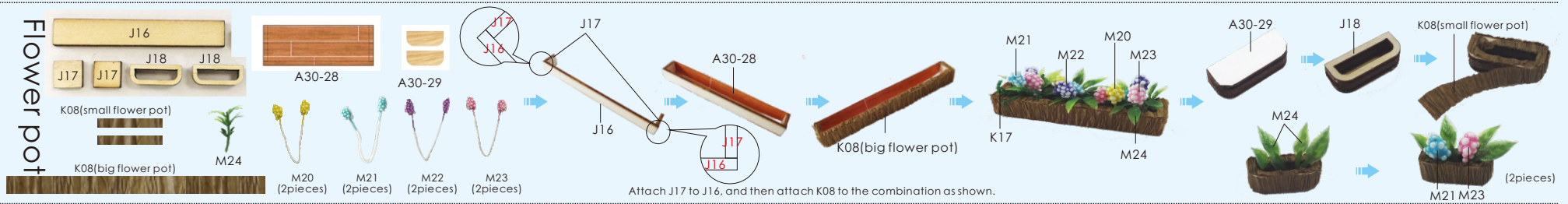
# Floor lamp



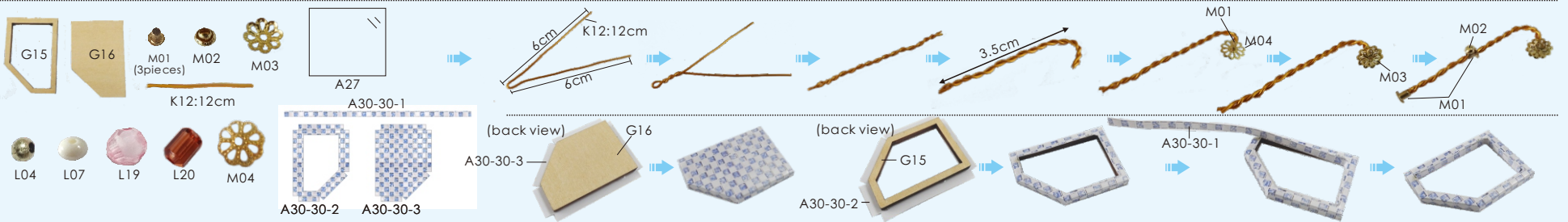




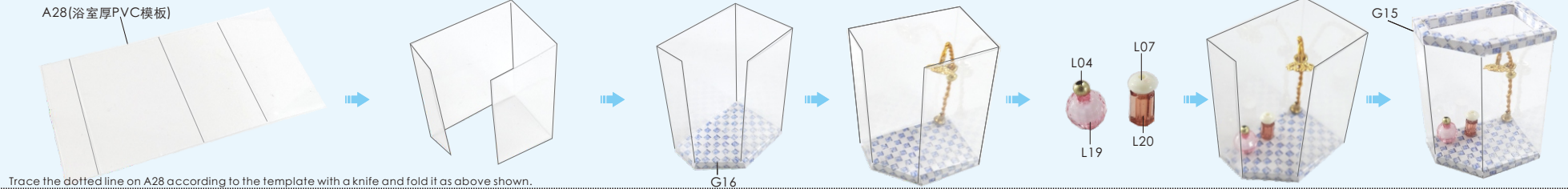
Flower pot



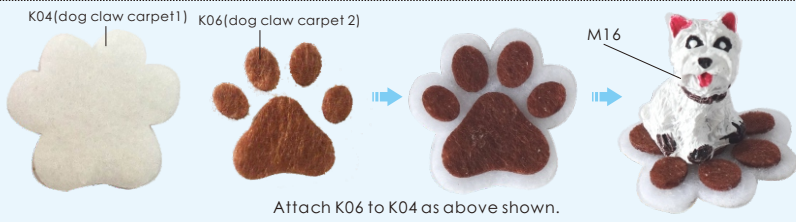
Bathroom



A28(浴室厚PVC模板)



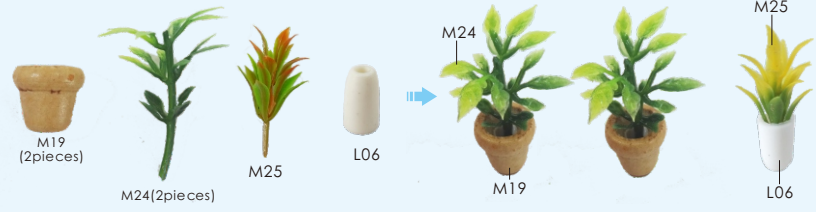
Dog claw carpet



Slippers



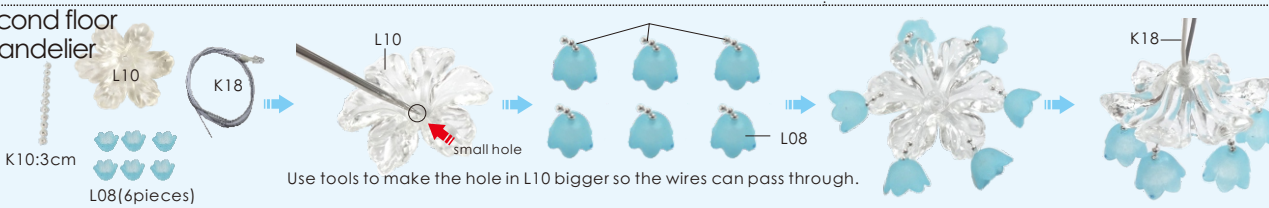
Potted plant



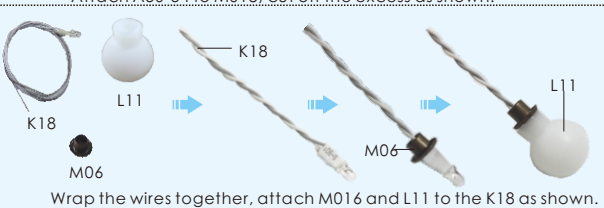
Toilet



Second floor chandelier

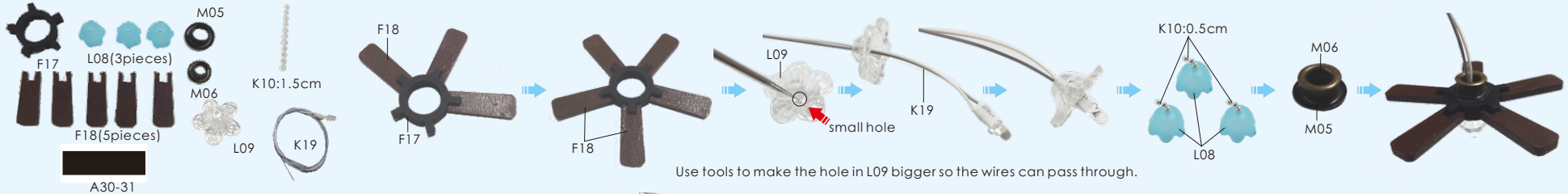


chandelier





First floor chandelier

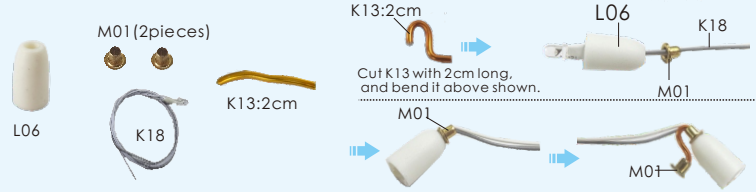


Use tools to make the hole in L09 bigger so the wires can pass through.



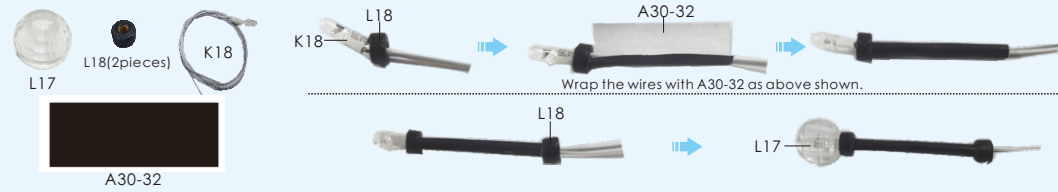
Roll up A30-31 and cut a opening with scissors.

Wall lamp  
Street lamp

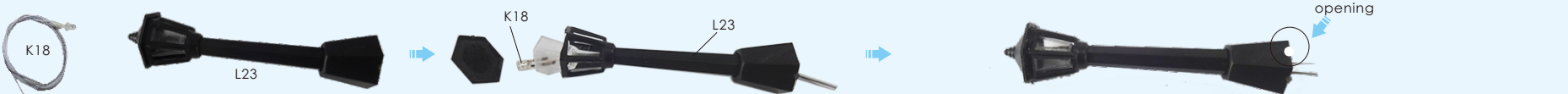


Cut K13 with 2cm long, and bend it above shown.

Chandelier

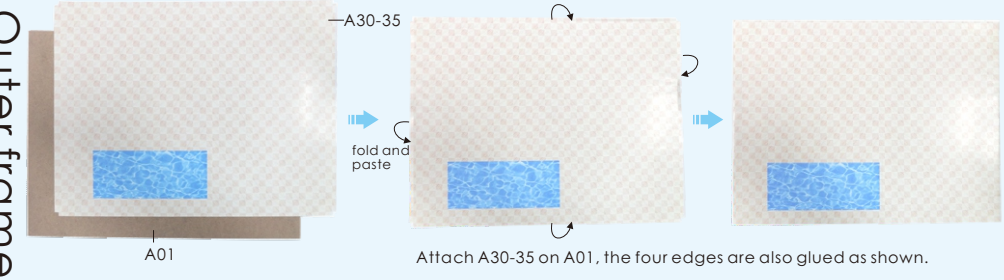


Wrap the wires with A30-32 as above shown.

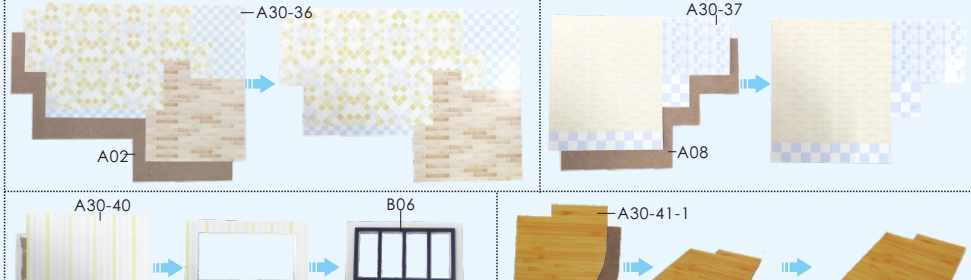


Attach K18 to L23, cut a opening on the bottom of L23 as above shown.

Outer frame



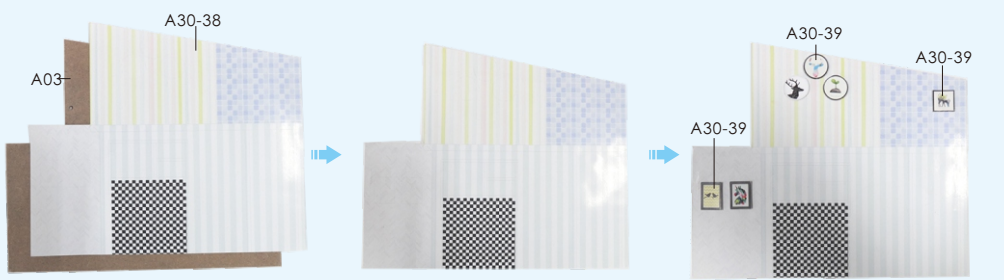
fold and paste  
Attach A30-35 on A01, the four edges are also glued as shown.



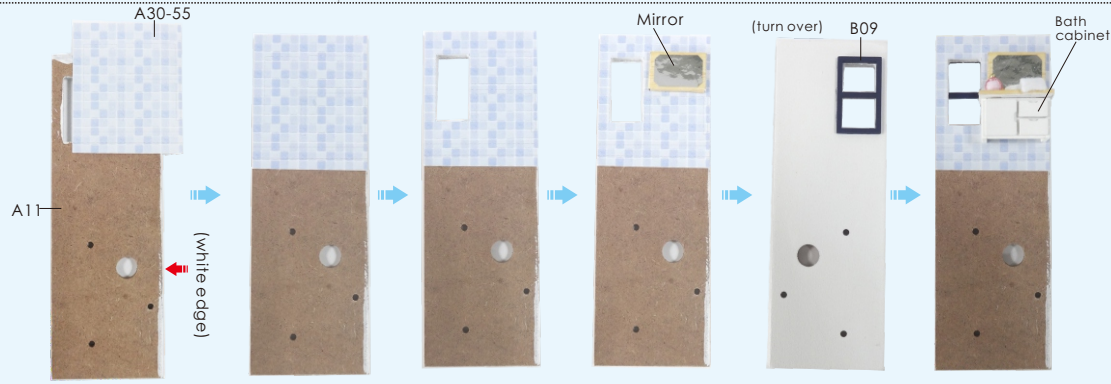
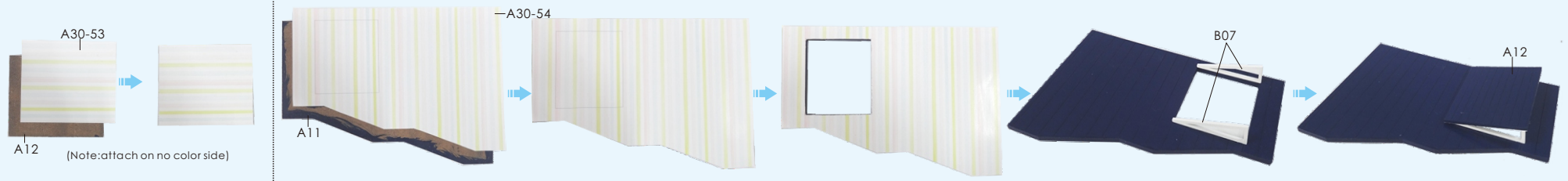
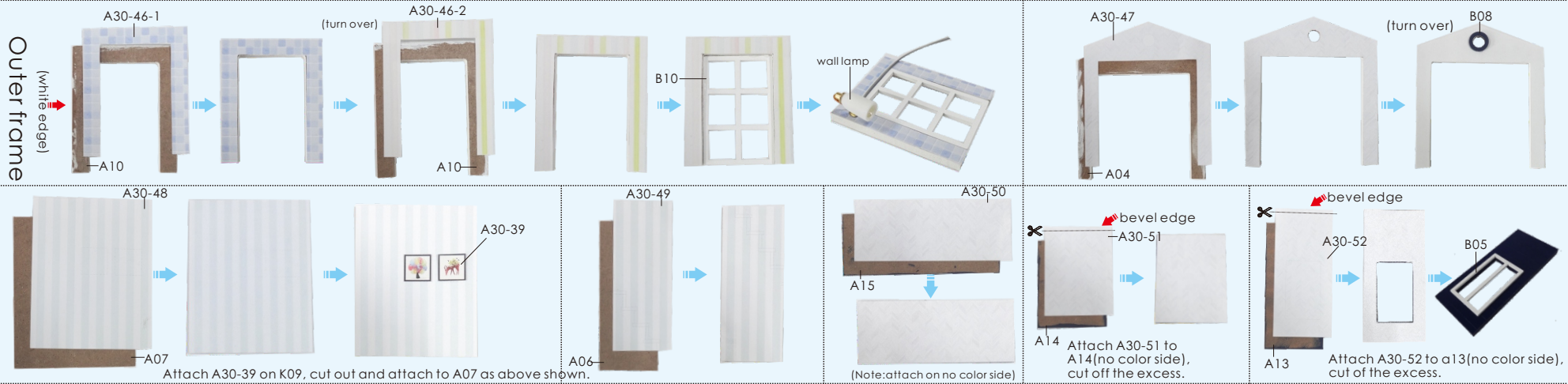
Attach A30-42 on A22, the four edges are also glued as shown.

(turn over)

Attach A30-45 on C13 as shown.



Attach A30-39 on K09 and cut off, and then attach them to A03 as above shown.



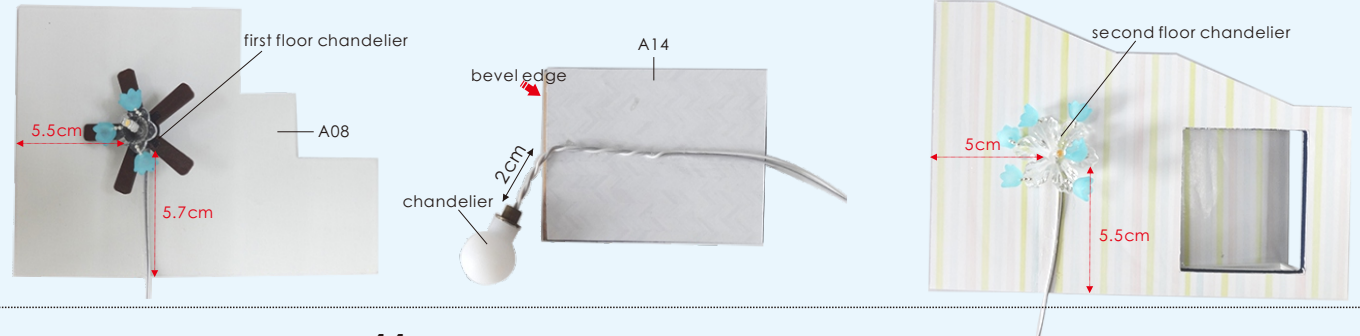
**Music machine core manual guide**  
(If you have purchased the music machine core, please fix it firstly)

N01 Music machine core 1 piece	N02 Music machine core handle 1 piece	N03 Screw 3 pieces

N01 → N02 → N03

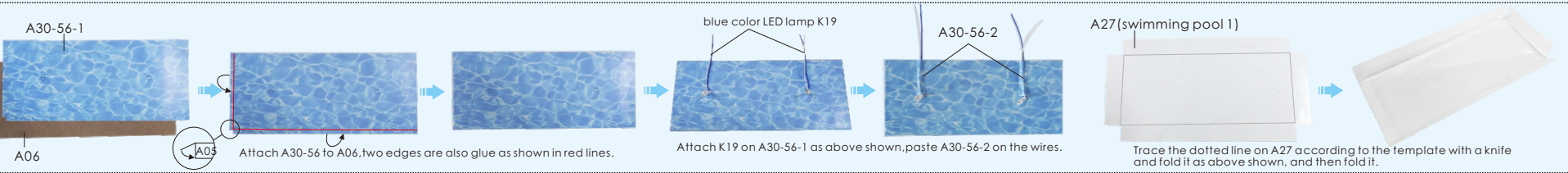


**Installation of lamps**

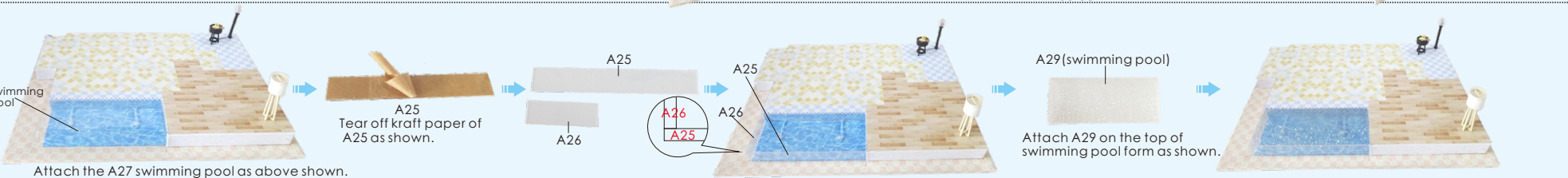
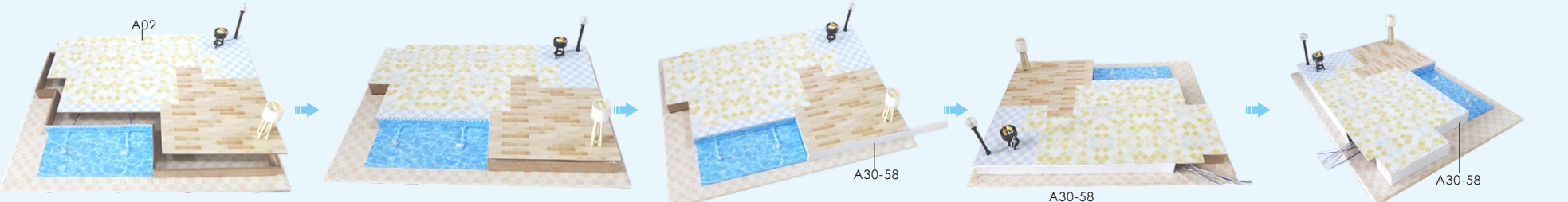
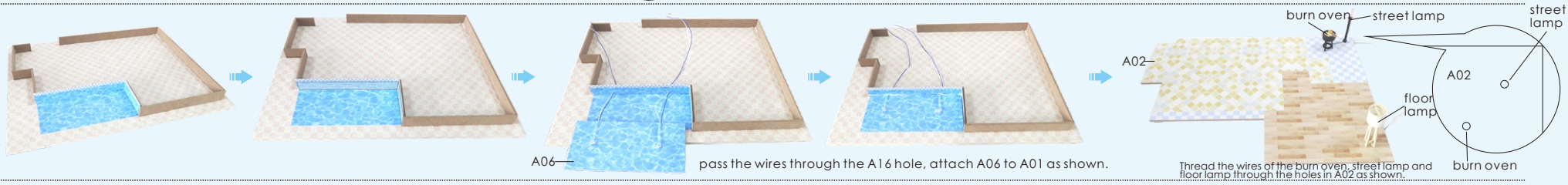
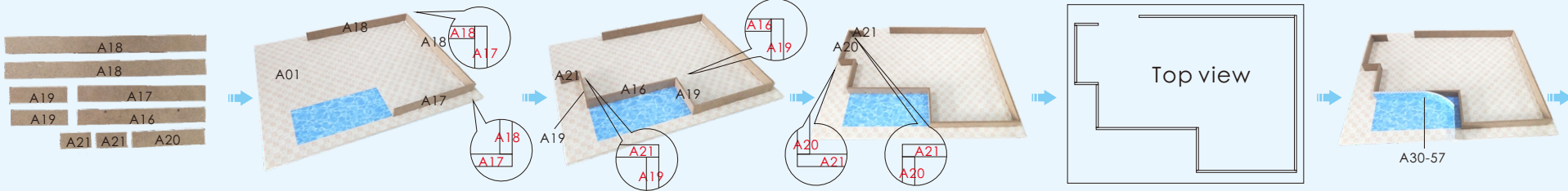




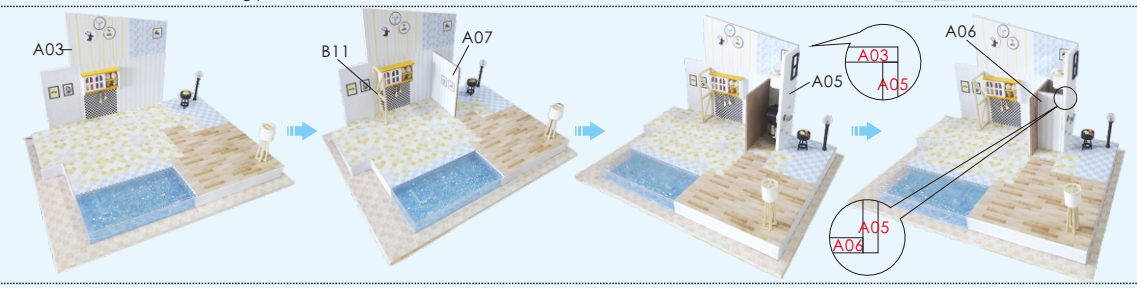
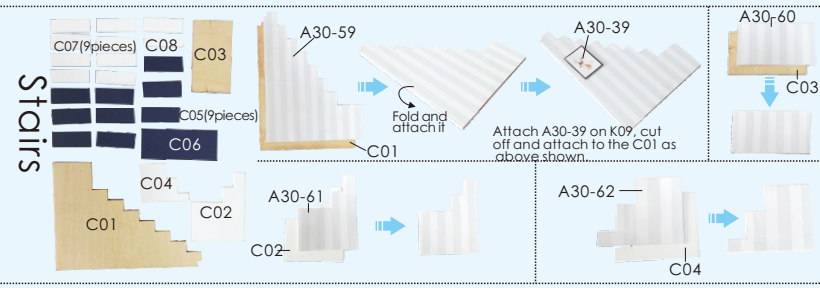
Swimming pool



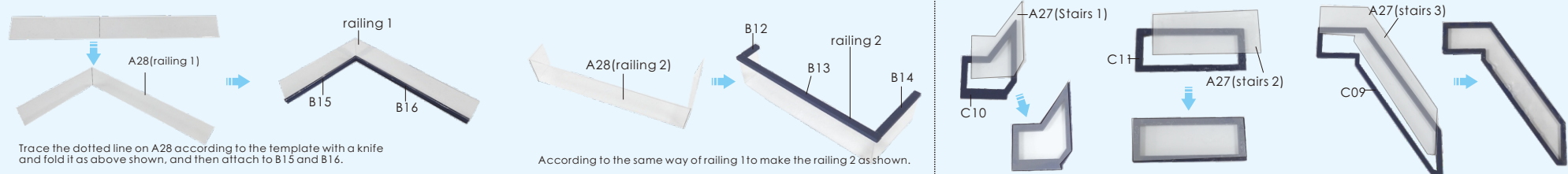
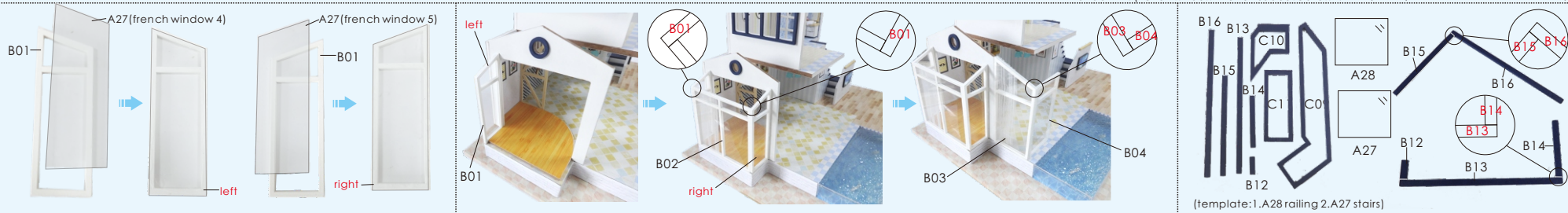
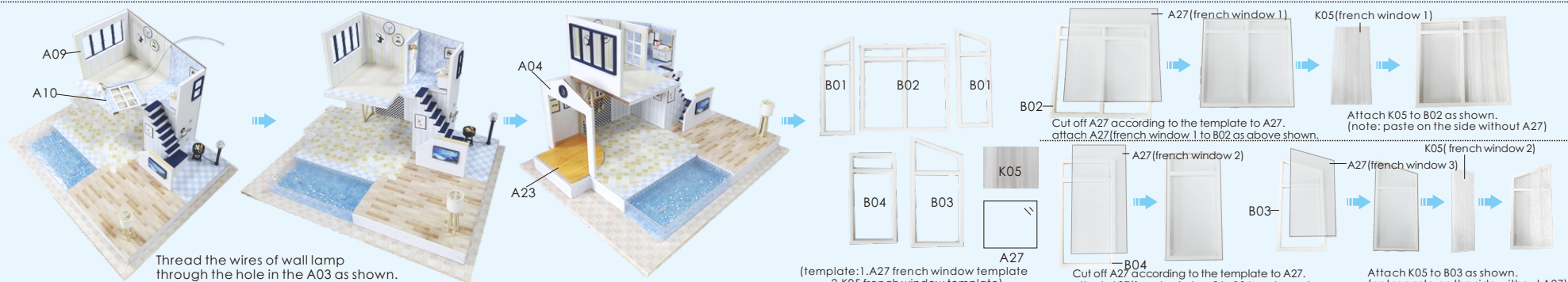
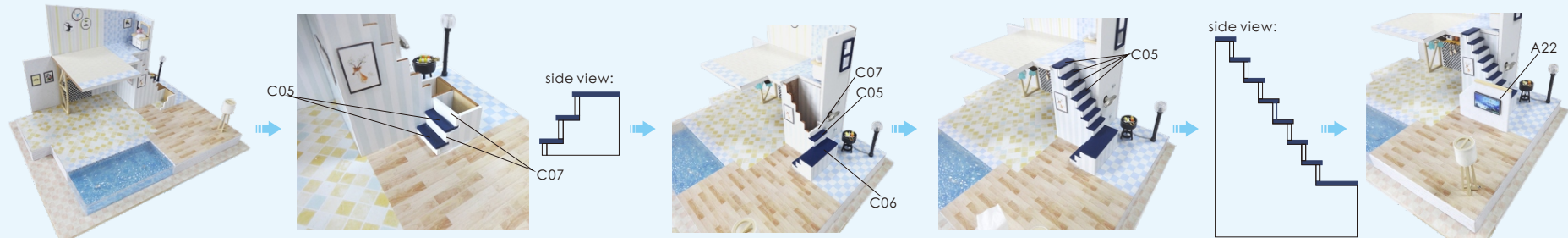
Outer frame



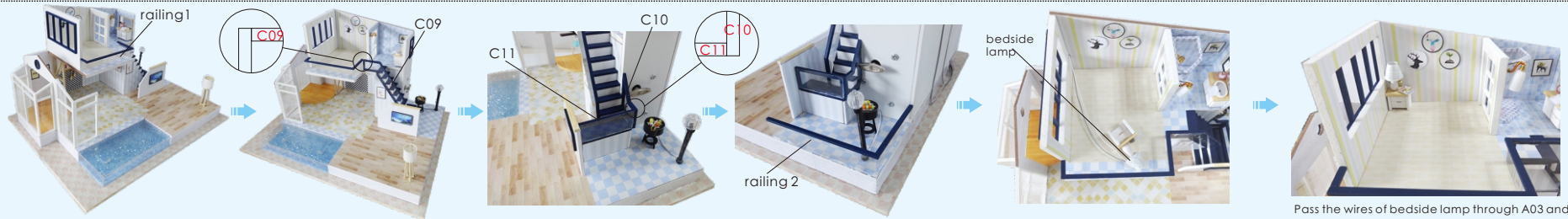
Stairs



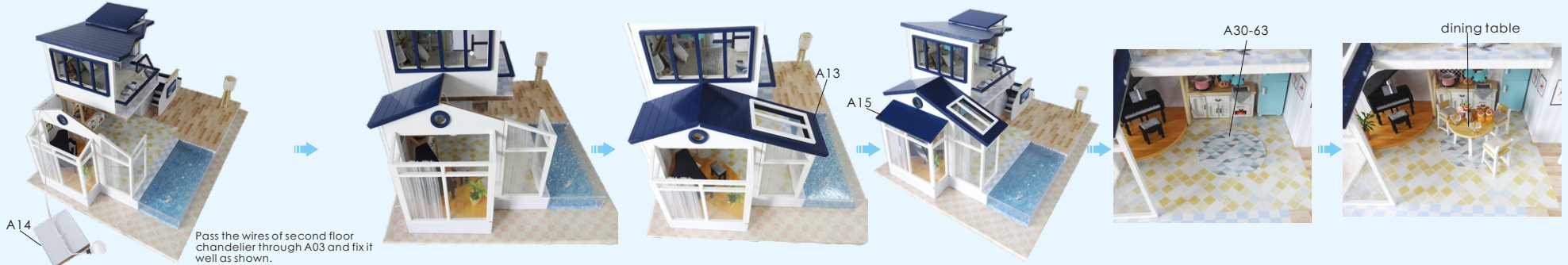








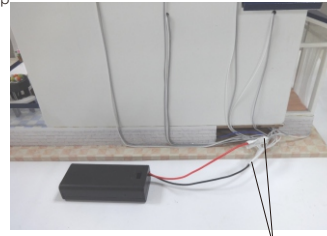
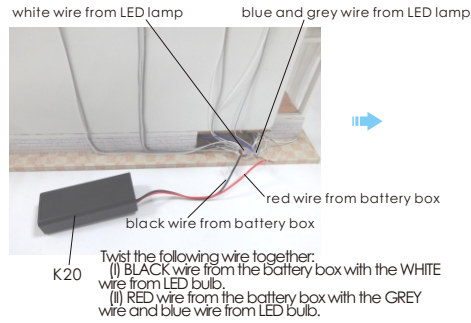
Pass the wires of bedside lamp through A03 and fix it well as shown.





**Statement: the lamp wires cannot be inserted into the output socket.**

- Can use 7 batteries
- Please notice the place of anode and cathode when pit in the batteries
- Rechargeable batteries are not blunt electricity
- Rechargeable batteries can only be charged under adult supervision
- Rechargeable batteries should be removed from the toy before charging
- Different types of batteries cannot mix; Do not mix new batteries in use with semi-used batteries.
- Run out of battery should be removed from the toy
- The power shall not be short circuit



Roll and seal the duly twist copper with the white tape K21 provided. Place the battery box in the allocated space.



**Installation of dust proof cover**  
(For updated version, the parts need to be purchased separately)



Scale 1:10  
N04 Transparent cover  
0.15\*25\*33 1piece



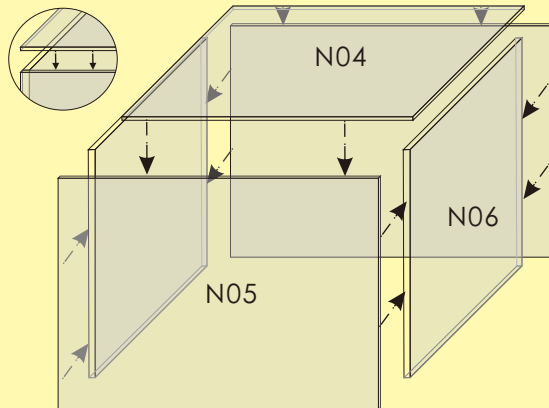
Scale 1:10  
N05 Transparent cover  
0.15\*22\*33 2pieces



Scale 1:10  
N04 Transparent cover  
0.15\*22\*24.7 2pieces



1. Tear off kraft paper of each piece of transparent cover.



2. Paste N04, N05, and N06 together to complete the dust proof cover as shown.

## Photo of Dust proof cover



**Attention: Please keep the instruction for future enquires after installation.**